

PainesvilleBaptistChurch.org Network Services

E-MAIL, CALENDARS, BLOGS, A WEBSITE
AND WHAT IT MEANS FOR YOU

What we've got


- A website
 - Photo galleries
- E-mail
- Calendars
- Blogging
- Chat
- Document Sharing

The Website

WWW.PAINESVILLEBAPTISTCHURCH.ORG

The Home Page

- **Answers the basic questions:**
 - What?
 - Where?
 - When?
- **The current memory verse**
- **Webmaster contact information**
 - May move to a more general contact page
- **The FAQ**



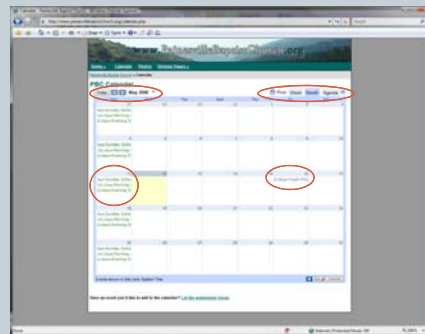
Zooming in



- The main navigation is the bar underneath the banner

The Calendar

- Shows all events from all calendars
 - More on that later
- Color coded to make things easy to categorize
- Easy navigation to plan ahead
- Customize the look and print it out



Division Pages



- Accessible via the “Division Pages >>” dropdown
- The home page should have some basic information about the division
- A work in progress
- Let us know!

More Pages

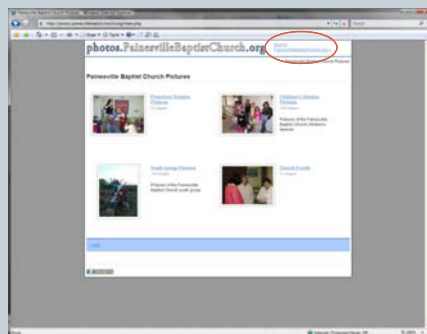
- Custom pages are available
- Great for special events
- Just contact the webmasters!



One more link...



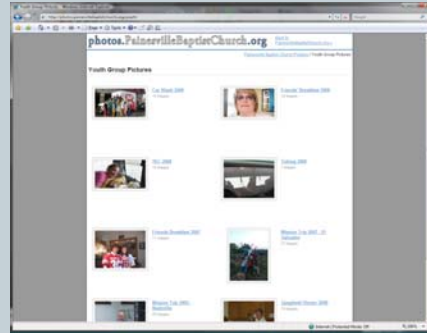
The photo gallery



- A separate site
- Accessible in two ways
 - From the link at the top
 - The direct URL
- A link to get back at the top
- Sections for the divisions as well as general church events

The photo gallery

- Each section is made up of a bunch of different galleries



The photo gallery

- Each gallery has all of the pictures and can be captioned



The photo gallery

- **Pictures can be enlarged twice**
 - Small size – suitable for a browser
 - Large size – no compression, no loss of quality – suitable for printing



The Website

QUESTIONS?

E-mail / Calendars

E-mail

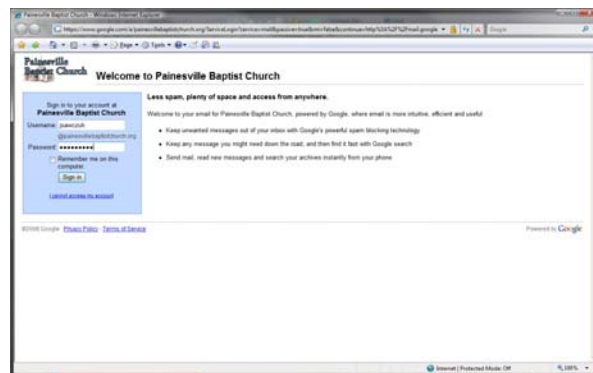
- **Addresses:**
 - firstinitiallastname@**painesvillebaptistchurch.org**
 - Example:
 - ✦ Jimmy Sawczuk = jsawczuk@painesvillebaptistchurch.org
- **Distribution lists**
 - One e-mail address, multiple recipients
 - Example: youthgroup@painesvillebaptistchurch.org
 - ✦ Goes to Pete and Sue
- **Aliases**
 - Multiple addresses, one recipient
 - Example: pastor@painesvillebaptistchurch.org and sdrain@painesvillebaptistchurch.org both to go Stoney

Accounts

- **Accounts can be created by:**
 - Me (jsawczuk@painesvillebaptistchurch.org)
 - Sue Sawczuk (ssawczuk@painesvillebaptistchurch.org)
 - Pete Sawczuk (psawczuk@painesvillebaptistchurch.org)
 - webmaster@painesvillebaptistchurch.org
- **One account gets**
 - An e-mail address (or more, with aliases)
 - ✦ Almost 7 GB of storage
 - A personal calendar (with abilities to access shared calendars)

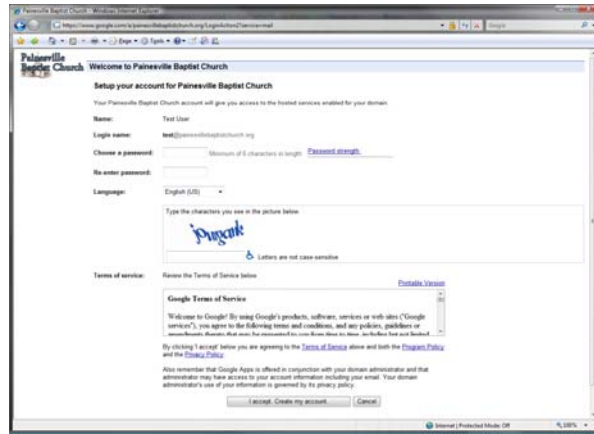
Checking your e-mail

Log in using the username and password given when your account was created



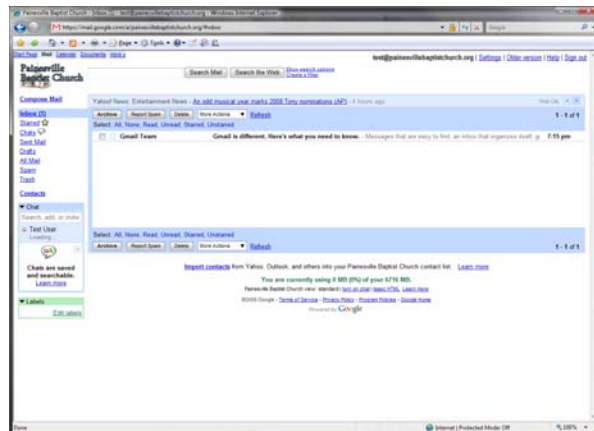
The initial setup

The first time you log in, you're asked to change your password to something easier to remember

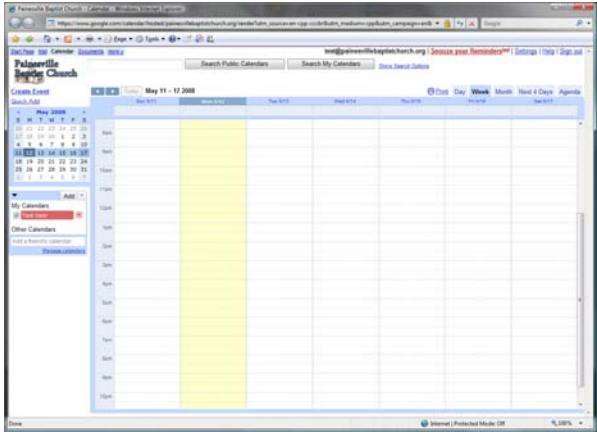


Your inbox


The interface is exactly the same as Gmail's



Your calendar
Exactly like Google Calendar



Chat
Google Talk works with your PBC.org account and can be used to chat with everyone on our domain (or anyone with a Gmail address)



More Information

- **Webmasters/Administrators**

- Jimmy

- jsawczuk@painesvillebaptistchurch.org

- Pete

- psawczuk@painesvillebaptistchurch.org

- Sue

- ssawczuk@painesvillebaptistchurch.org

- All three

- webmaster@painesvillebaptistchurch.org

- **Check out the FAQ on the home page for more information!**

- <http://www.painesvillebaptistchurch.org/netfaq.php>

Questions?